



Attachment 1

	A	B	C	D	E	F	G
1	SOURCE NAME	TO TRIBUTARY	TOWNSHIP	RANGE	SECTION	QQ	SURVEY CODE AND NUMBER
2	Hill Creek	Hangman Creek	43N	03W	4	SENE	
3	Unnamed Stream	Hangman Creek	43N	03W	4	SESW	
4	Unnamed Stream	Hangman Creek	43N	03W	4	SWSW	
5	Conrad Creek	South Fork Hangman Creek	43N	03W	8		
6	Unnamed Stream	Conrad Creek	43N	03W	8		
7	Unnamed Stream	Hangman Creek	43N	03W	8		
8	Unnamed Stream	Hangman Creek	43N	03W	8		
9	Unnamed Stream	Smith Creek	43N	04W	14		
10	South Fork Hangman Creek	Hangman Creek	43N	04W	23		
11	Unnamed Stream	Smith Creek	43N	04W	23		
12	Unnamed Stream	Smith Creek	43N	04W	23		
13	Unnamed Stream	South Fork Hangman Creek	43N	04W	23		
14	Unnamed Stream	South Fork Hangman Creek	43N	04W	23		
15	Unnamed Stream	South Fork Hangman Creek	43N	04W	24	SWNW	
16	Unnamed Stream	Smith Creek	43N	04W	27		

Attachment 2  
 Place of Use Map Fire Suppression - Water Right No. 93-07671A  
 National Forests in Idaho and the Kaniksu, Lolo and Kootenai NF in Montana

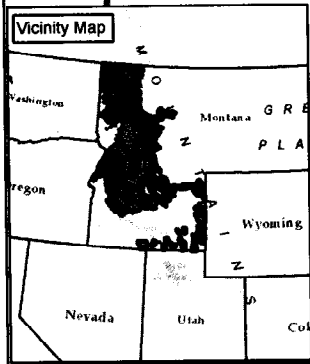
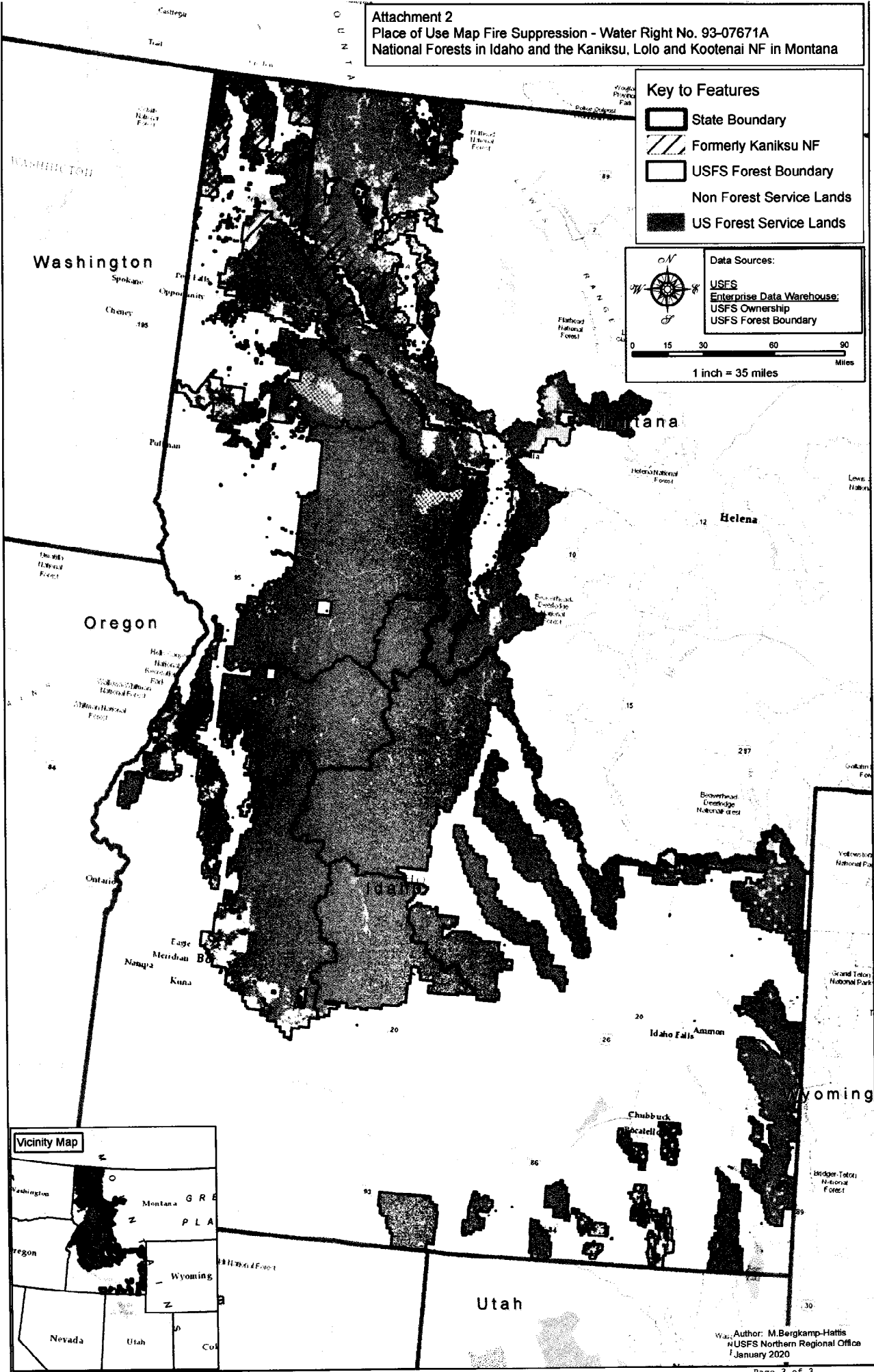
**Key to Features**

- State Boundary
- Formerly Kaniksu NF
- USFS Forest Boundary
- Non Forest Service Lands
- US Forest Service Lands

**Data Sources:**

- USFS
- Enterprise Data Warehouse
- USFS Ownership
- USFS Forest Boundary

1 inch = 35 miles



Author: M. Bergkamp-Hattis  
 USFS Northern Regional Office  
 January 2020